



THE CUE SHEET

**The Newsletter Of The Elmhurst Bicycle Club
Riding Strong Over 30 Years.**

A club serving; Northern Illinois, Chicagoland, and beyond: riding anywhere, any time, day or night--year round. Come join the fun!



Coming Events

RENEW

EBC MEMBERSHIP

Use the enclosed membership form to renew membership for 2008.

SKI THE UP

Feb.3 - Feb 8, 2008 Contact Sharon Hermach or call the Indianhead Motel 906.932.2031

NORTH AMERICAN HANDMADE BICYCLE SHOW

Feb. 8 - Feb. 10, 2008 Portland, OR <http://www.handmadebicycle-show.com/2008/>

GITAP

Jun. 15 - Jun. 21, 2008
Information:
www.bikelib.org/gitap; oestreich@qconline.com; or call Chuck Oestreich at 309-788-1845.

Metro Metric Dead For 2008

By Ray Dal Lago, President

For the past several months I've stressed the need for a Metro 2008 Chairperson. To organize and plan the event, we needed to have a chairperson in place by December 15. The date has passed without a volunteer. Regrettably, Metro will not take place in 2008.

I, like many of you, assume the Metro to be part of our legacy but, for many different reasons, the ride is tougher to coordinate than ever.

It is sad that the ride will not happen in 2008. Maybe we can bring it back in 2009.

At this time, we should think of other ways EBC can bring the cycling community together in 2008. I now ask for your thoughts on possible rides, cycling related charity events, etc. we could do in 2008. Remember, EBC is an advocacy group and we need to promote cycling in various forms and for various reasons (mainly our survival). Please think of how we can use our resources to show others the positive values of cycling. Let's think of other rides we can do, events we can help sponsor, groups we can fund with either money or time. Think out of the box, too. Perhaps we can coordinate something with Elmfest, the Fourth of July festival in downtown Elmhurst. Let's think what we can do to bring cyclists together.



Let's Keep Bananaman

By Keith Garland

On behalf of a number of interested club members I'd like to explain why I believe we should keep the EBC's "Bananaman" icon.

1. Overall, Bananaman's welcoming wave and smile invites one in to share fun, camaraderie, and friendship. The Bananaman image is dynamic showing a rider on the go and enjoying it. Bananaman has an outgoing and engaging personality.

2. Bananaman's helmet represents safety, consistent with our outreach goal to promote safe riding in the community.

3. Bananaman's high wheeler represents the progenitor of all bicycles from touring bikes, road bikes, tandems and mountain bikes.

4. The banana itself represents health and energy. It is compact food commonly found on club sponsored events.

5. Bananaman is historical and traditional, it has decades of success as an image of the club and is too young to retire.

6. Bananaman is a recognizable, but unique image, that draws interest in a positive way. Explaining what it represents is an excellent opportunity for members to enlighten potential new members.



The club constitution and by-laws, information on rider and ride leader responsibilities, ride schedules, awards program, member mileage, how to join the club, and much more are available online at: www.elmhurstbicycling.org. If you're not near a computer and need ride information, call the EBC Hotline at 630-415-BIKE (630-415-2453)

Elmhurst Bicycle Club Officers and Board Members

President

Ray Dal Lago, 630.543.4655
president_elmhurstbicycling.org

Vice President/Ride Captain

Steve Josephs, 630.655.8710
ridecaptain_elmhurstbicycling.org

Treasurer

George Pastorino, 708.903.8700
treasurer_elmhurstbicycling.org

Secretary

Tom Manata, 630.971.1012
secretary_elmhurstbicycling.org

Membership Coordinator

Susan Sperl, 630.416.0655
membership_elmhurstbicycling.org

Newsletter Editor

Petra Lynn Hofmann, 630.833.1667
newsletter_elmhurstbicycling.org

Advocacy

Bob Hoel
bob.hoel_comcast.net

Publicity

John Park, 630.690.2881
john1park_comcast.net

Programs

Tom Mara, 630.833.5739
marafamily_comcast.net

Database Manager

Mary Moroney, 630.629.1812
cycling33_comcast.net

Internet Bike Info

Rich Kuhlman, 630.462.5427
rkuhlman99_comcast.net

Website

Cindy Reedy, 630.530.1250
cmreedy_prodigy.net

List Server

Marty Kotecki, 630.620.6434
orionradio1_gmail.com

Refreshments

Looking for Volunteers

Safety

Larry Gitchell, 708.409.0105
larsofmars_aol.com

Newsletter collating

Judy Mikesell, 630.833.1036
mikesell2_juno.com

Sergeant-at-Arms

Volunteer Needed

Assistant Ride Captain

Nancy Rice, 630.717.9923
hotline_elmhurstbicycling.org

Mountain Bike Coordinator

George Pastorino, 708.903.8700
gpastorino_comcast.net



Opinion and Comment

Petra Lynn Hofmann

The new year ushers in several new issues we EBC's have not had to face in previous years: no Metro Metric, and what to do about the club logo and mascot--"bananaman". Metro Metric is cancelled this year due to lack of a volunteer chairperson. In many respects, this is not surprising as finding volunteers for the event has become more difficult with each passing year. Furthermore, it's not only our club that is experiencing this difficulty, but many organizations in general are finding it exceedingly difficult to motivate organization members to work for no pay. When an organization, such as the Chicago Bicycle Federation, with paid staff and volunteer organizers, has difficulty finding volunteers to work their events, what chance do we have? I believe once the production momentum is gone it will be even more difficult to re-stage this event in later years.

What, if any, are the alternatives? Does the club really need to sponsor a fund raising event so that we may enjoy free T-shirts, patches, and certificates? Can not this be paid for out of dues, either at their current level or with a modest increase in dues? Other sources of income suggested include: bake sales, bicycle tent sales, articles of bike clothing, and sponsorships. Fortunately, sponsorship is one method that worked well for us this year. However, this may not last if sponsors don't see their contribution paying off in increased business from club members.

I would offer the following fund raising ideas for consideration: A DuPage County Bicycle Map, not a clone of the CBF effort; an Elmhurst Bicycle Club Calendar, maybe not *Calendar Girls* but similar in concept; an annual EBC/DuPage County bicycle poster, and last if need be, a suburban multi-club event (not the I-355) which would attract a large participation. For the later item, I think a multi-day event the circumscribes DuPage County's bike trails could be large enough and interesting enough to attract many riders and the participation of other bike clubs.

What to do about "bananaman" and a new club logo? Keith Garland wrote an interesting piece as to why we should keep the little yellow guy riding a turn-of-the-last-century bicycle. I didn't have much luck finding a submission for the opposing view. However, I've heard it suggested that the decision falls along the lines of age and riding speed. That is, those who are either younger or ride faster desire a different image for the club. Interesting, but I'm not fully convinced this is why we should find another image to use for our club logo. I've felt for some time that the current image needs to be more professionally rendered. It is not suitable for most graphic work, not to mention the troubles I've had using it in the newsletter. I understand, listening to others, that other bike clubs have encountered similar issues when trying to change a long standing logo for something more modern. My suggestion for improving the logo would be to make it as plain and simple as possible, with little or no illustration, relying on graphics and graphic design to represent the club. For reference, look at corporate logos with their simple yet suggestive use of design and color to convey their corporate image. Notice how the really simple designs have the most lasting appeal. e.g. GE, AA, Prudential, 3M to name a few. I think we would do well to imitate these for ourselves.

The North American Handmade Bicycle Show opens in Portland, OR on February 8. For three days most of the best custom bicycle manufacturers will be present to display their work and attend seminars design to educate and improve their craft. In addition, your newsletter editor, moi, will be there too, to take photos and speak with the leading frame manufactures in the U.S. and Canada. I will attempt to take a few videos and post on YouTube for your enjoyment, but don't be surprised if this fails due to lagging my ageing computer around.

It has now been about three months, maybe a little longer, since I rode my bike. I can't believe I've not moved even the crank in that amount of time. I dread this Spring when I must get back on it and work to condition myself. Ugh!

One last sour note. My long time companion, Buddy, succumbed to age. He lived with me for the last 16 years and wanted only food and clean litter. In return, he gave much comfort and affection.

North American Handmade Bicycle Show

SPEEDWAY, Indiana

Following a promising buildup The North American Handmade Bicycle Show (NAHBS), the world's largest trade/consumer show for custom-built bicycles, is on the verge of selling out all 185 exhibitor spaces as it heads to the cycling-friendly city of Portland, Oregon, for the first time in the show's three-year history.

The 2008 show will be held in the Oregon Convention Center, Portland, February 8-10.

Show director, Don Walker, the founder of NAHBS, and the show's presenting sponsor, says "I am truly delighted. The show has had three good growth years already, but heading into our fourth we are growing beyond my expectations. I am very confident we will sell all our booth spaces. With seven weeks until the show, we only have ten spaces left, and I am talking with companies that wish to fill those spaces."

The 2007 show, in San Jose, California, was the largest to date, featuring 103 exhibitors who collectively occupied 130 booth spaces. So far 134 exhibitors have signed up. That's almost exactly 30% growth over '07 in exhibitors, and 43% growth in booth spaces sold.

On a recent visit to Portland, show organizers noted considerable public,

as well as industry, interest in the show in the Pacific Northwest region, extending as far north as Vancouver, BC.

About The North American Handmade Bicycle Show

The North American Handmade Bicycle Show is dedicated to showcasing the talents of individuals around the world whose art form is the bicycle. It aims to be a gathering point

– online and in person – for frame-builders and consumers looking for custom-made bikes, for the sharing of ideas and promotion of this industry and its traditions. After three years of growing by leaps and bounds, NAHBS 2008 will feature still more exhibitors, consumers and a wealth of seminars. For more information, see <http://www.handmadebicycles-how.com>.



Townsend Track Bike

The timeless elegance of a Townsend track bike, which apparently has already uncorked its sprint.

Photo: © Jessica Lifland www.jessicalifland.com

Tristan und Isolde

Teatro alla Scala 7 December 2007

For all of you opera buffs, I thought you might enjoy this. I know I did, and even cried, too. If you are reading this online you will be able to click on the YouTube link below and watch the performance. In fact, one can piece together the whole performance from YouTube.

Liebestod

Isolde - Waltraud Meier

Conductor – Daniel Barenboim

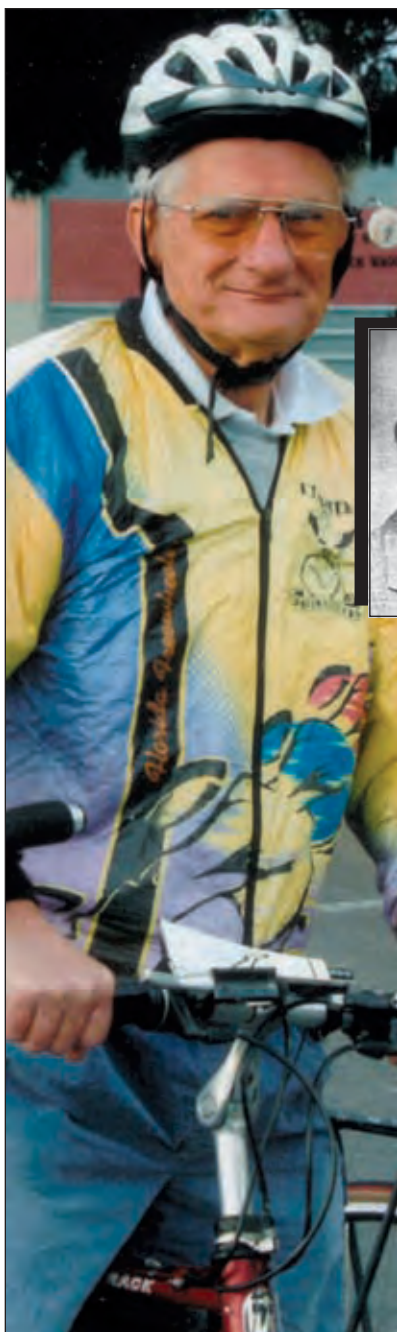
<http://uk.youtube.com/watch?v=GN3QJl1wC7E>

Village CycleSport
Dedicated to the Sport of Cycling

Vince Boyer

45 Arlington Hts. Rd • Elk Grove Village, IL 60007 • (847) 439-3340
1313 N. Rand Road • Arlington Heights, IL 60004 • (847) 398-1650

Email vince@villagecyclesport.com www.villagecyclesport.com



Look at me now! Alumni News

Richard Diebold, '47



Fine woodworking and long distance cycling may not seem to have much in common, but for Richard Diebold (York class of 1947), they make a wonderful life.

As a sophomore at York Community High School, Richard, now 77, was asked to transfer into Mr. Mahood's Woodworking class. Since his father was in the business of making fine furniture and cabinetry, Richard took the transfer gladly and never looked back. Now 63 years later, he is working with two of *his* sons at Diebold Cabinet Shop in Chicago (founded 1936). Diebold cabinet makers are literally furniture makers to the stars. With clients like Oprah and Paul Harvey—they have a long tradition of master

craftsmanship available to those who can afford the luxury of custom made furniture and woodworking.

Of course, having his sons (two of his six children) in the business leaves Richard plenty of time to pursue his avocation of long distance cycling.

As a charter member of the 30-year-old, 350-member Elmhurst Bicycle Club, Richard has many fond memories of scores of trips and thousands of miles covered with the club, with other cycling organizations, with his wife Freda, and as a solo rider. Most trips are completed with a tent and supplies on his back! "The only thing we don't carry is food," Richard said. "We stop and eat in restaurants along the way because preparing food at a campsite takes too much time away from cycling (and resting)," he added.

His most recent trip this summer was a 1,000 mile loop of Wisconsin. But that's one of the shorter excursions. Richard has biked across the Rocky Mountains on his trips from Montana to Alaska, Seattle to Yellowstone, Minnesota to Los Angeles, and oh yes, one relatively "flat" trip from Live Oak, Florida to Chicago—just to mention a few. With more than 30 trips under his belt, he is still going strong. "We plan a week-long trip every year," he added.

When attending the class of 1947 reunion at York Community High School in October, Richard did not arrive with his classmates on the school bus. Instead, he parked his favorite mode of transportation in the bike rack in front of the school and casually joined the group for the tour of the school. When asked where he had traveled from, he nonchalantly said, "Oh, I biked over from Schaumburg."

Interesting how one can ride with a member for years and not really know anything about them. What a great article about one of our long-time members. One skill not mentioned is Rich and Freda's cooking, which many of us have enjoyed after an early morning ride through the DuPage suburbs. Thank you both -Editor

*Photo and article courtesy of Val Stewart,
Elmhurst CUSD 205 "School House News" - Fall 2007*



**Midwest
Cyclery**
"Family Service & Quality Products"

www.midwestcyclery.com

117 East Front St.
Downtown Wheaton
630-668-2424

our
25TH
year

Cannondale
Diamondback
Fuji

TREK BICYCLE STORE
— DOWNERS GROVE —

TREK FISHER LEMOND SEROTTA
All Your Cycling Needs
Sales - Service - Custom - Bike Fitting
Expert Assistance

639 Ogden Ave Downers Grove
630 971 8877
www.americanbike.com

**Northwestern Illinois prairies;
the Mississippi River bluffs around Palisades State Park;
the trail-friendly Quad Cities;
and down-home small town hospitality!
What's not to like?**

This year try the Grand Illinois Trail And Parks ride. Set for mid June—Sun., the 15th to Sat., the 21st. When bicycling is at its best. GITAP is a week-long biking loop featuring routes focused on the Grand Illinois Trail combined with overnights at three outstanding state parks and one college campus.

The route is generally flat with some optional hilly areas. Mileage choices range from 300 to 550 miles for the week.

Included are dinners, breakfasts, camping sites, an optional motel package, sags, bike repair, T-shirts, door prizes, and evening programs, including the optional Illinois Humanities Council's acclaimed Velosophie. For information: www.bikelib.org/gitap; oestreich@qconline.com; or call Chuck Oestreich at 309-788-1845.



SPOKES

HOURS

Mon-Fri
11 - 8

Sat
10 - 6

Sun
12 - 5



WHEEL THING

Specialized • GT All-Terra
Gary Fisher • Greg Lemond

Bruce Glaser
Owner

15 South La Grange Road
La Grange, IL 60525
708.352.3822

J & R CYCLE & SKI
716 S. Main • Lombard, IL 60148
(630) 620-1606

BOB PECORA

M & Th	10-8	Diamond Back • GT/DYNO
T & F	10-6	Fisher • Yakima
W	12-6	Haro • Univega
Sat	10-5	

Call for Winter Hours

TREK USA

You can't beat our prices!
If you find a lower price we will
match it and give you 11%
of the price difference.

Lickbike.com

www.lickbike.com
800-323-4083
24 Hour Phone (708)383-5541
310 Lake Street, Oak Park IL 60302




GREAT MEMO



UP skiers



A stop at the Chicago Art Museum while viewing tulips on Michigan Ave.



Many exhausted but happy, Metro Metric riders. Also, no corny photos of our fearless president.



ORIES OF 2007



Clockwise from Top Left: Tulips on Michigan Ave.; George Pastorina; Christmas Cookie Exchange; Vintage T-Shirts for Metro Metric, outdoor cafe in Chicago.



January 2008

Club Rides

**Special Events and
Non-recurring rides.**

Date	Time	Distance	Start	Leader	Ride Description
Tues Jan. 1	10:00 AM	10 miles 8-11 mph	Gazebo Glen Ellyn	Mary Moroney (630) 629 1812 (home) 630 936 3503 (cell)	New Year's Day Slower Ride Ride to Egg'lectic Cafe in Wheaton (145 N. Hale) for breakfast. Non-riders, meet us at the restaurant at 10:30 (please RSVP).
Tues Jan. 1	10:00 AM	20-25 miles 13-15 mph	Depot Elmhurst	Larry Gitchell (708) 421-0120 (Cell) (708) 409-0105 (Home)	New Years Day Ring in the new year with a ride! The "If it's snowing I'm not going" rule is in effect. Call first if the weather forecast calls for precipitation or temperatures below 25°
Wed Jan. 2	10:00 AM	Determined by riders	McCollum Park Downers Grove	Determined by riders	Wednesday Show and Go The riders will determine the ride leader, distance and pace
Wed Jan. 2	6:30 PM	Determined by riders	Depot Villa Park	Determined by riders	Wednesday Night Ride Show n Go The riders who show will decide ride leader, distance and pace. Lights are needed.
Thurs Jan. 3	9:30 AM	3 Hour Hike	Fullersburg Forest Preserve	Ted Sward 708-354-5782	Ted's Tours Part 5 This is a flat hike, but scenic, including part of the Oak Brook area. Meet at Fullersburg main lot off of Spring Road in Oak Brook. Bring Snacks.
Fri Jan. 4	10:00 AM	Determined by riders	Sunset Knoll Park Lombard	Determined by riders	Friday Show and Go The riders will determine the ride leader, distance and pace
Sat Jan. 5	10:00 AM	Determined by riders	Depot Elmhurst	Determined by riders	Weekly Show and Go The riders will determine the ride leader, distance and pace
Sun Jan. 6	9:30 AM	20-30 miles 11-14 mph	Panera Bread Elmhurst	Determined by riders	Sunday without Petra Petra's usual Sunday AM ride, but we need volunteers to lead this as a Show and Go during January.
Sun Jan. 6	9:30 AM	20-25 miles 16-18 mph	Panera Elmhurst	Dave Polkow 630-832-8131	Sunday Morning Fast Ride A brisk paced road ride with optional sprints. There is usually no rest stop for this shorter ride. This ride goes out whatever the weather - in case of poor road conditions, a notice will be sent out to bring mountain bikes.
Sun Jan. 6	9:30 AM	20 miles 10-12 mph	Panera Elmhurst	Determined by riders	Sunday Slow Ride Show & Go The slow ride is a S&G for January.
Sun Jan. 6	9:30 AM	30-40 miles 15-17 mph	Panera Elmhurst	Jeff Wincentsen 630-832-3338	Jeff's Sunday Morning Ride A road ride exploring DuPage and Cook counties. Includes one short stop. Bring enough food/drink to refuel. Temps below 32 degress at ride start time or precipitation will cancel.
Sun Jan. 6	12:30 PM	Determined by riders	Gazebo Glen Ellyn	Determined by riders	Sunday Show and Go The riders who show will decide ride leader, distance and pace.
Tues Jan. 8	9:30 AM	3 Hour Hike	Little Red School House	Ted Sward 708-354-5782	Ted's Tours Part 6 A new look at some old trails. Little Red School House is 1/2 mile south of 95th St. on Willow Springs Rd. (Flavin/104th Ave.) Bring Snacks.
Wed Jan. 9	10:00 AM	Determined by riders	McCollum Park Downers Grove	Determined by riders	Wednesday Show and Go The riders will determine the ride leader, distance and pace
Wed Jan. 9	6:30 PM	Determined by riders	Depot Villa Park	Determined by riders	Wednesday Night Ride Show n Go The riders who show will decide ride leader, distance and pace. Lights are needed.
Thurs. Jan. 10	7:15 PM		Community Bank Elmhurst	Ray Dal Lago 630-543-4655	Monthly Club Meeting Board meeting precedes club meeting.
Fri Jan. 11	10:00 AM	Determined by riders	Sunset Knoll Park Lombard	Determined by riders	Friday Show and Go The riders will determine the ride leader, distance and pace
Sat Jan. 12	10:00 AM	Determined by riders	Depot Elmhurst	Determined by riders	Weekly Show and Go The riders will determine the ride leader, distance and pace
Sun Jan. 13	9:30 AM	20-30 miles 11-14 mph	Panera Bread Elmhurst	Determined by riders	Sunday without Petra Petra's usual Sunday AM ride, but we need volunteers to lead this as a Show and Go during January.

Ride Schedule

Date	Time	Distance	Start	Leader	Ride Description
Sun Jan. 13	9:30 AM	20-25 miles 16-18 mph	Panera Elmhurst	Dave Polkow 630-832-8131	Sunday Morning Fast Ride A brisk paced road ride with optional sprints. There is usually no rest stop for this shorter ride. This ride goes out whatever the weather - in case of poor road conditions, a notice will be sent out to bring mountain bikes.
Sun Jan. 13	9:30 AM	20 miles 10-12 mph	Panera Elmhurst	Determined by riders	Sunday Slow Ride Show & Go The slow ride is a S&G for January.
Sun Jan. 13	9:30 AM	30-40 miles 15-17 mph	Panera Elmhurst	Jeff Wincentsen 630-832-3338	Jeff's Sunday Morning Ride A road ride exploring DuPage and Cook counties. Includes one short stop. Bring enough food/drink to refuel. Temps below 32 degress at ride start time or precipitation will cancel.
Sun Jan. 13	12:30 PM	Determined by riders	Gazebo Glen Ellyn	Determined by riders	Sunday Show and Go The riders who show will decide ride leader, distance and pace.
Tues Jan. 15	9:30 AM	3 Hour Hike	Teason's Woods Forest Preserve	Ted Sward 708-354-5782	Ted's Tours Part 7 Meet at Teason's FP at the intersection of 111th St. (Route 83) and 104th Ave. (Willow Springs Rd.) SE Corner. Palos area. Bring snacks.
Wed Jan. 16	10:00 AM	Determined by riders	McCullum Park Downers Grove	Determined by riders	Wednesday Show and Go The riders will determine the ride leader, distance and pace
Wed Jan. 16	6:30 PM	Determined by riders	Depot Villa Park	Determined by riders	Wednesday Night Ride Show n Go The riders who show will decide ride leader, distance and pace. Lights are needed.
Fri Jan. 18	10:00 AM	Determined by riders	Sunset Knoll Park Lombard	Determined by riders	Friday Show and Go The riders will determine the ride leader, distance and pace
Sat Jan. 19	10:00 AM	Determined by riders	Depot Elmhurst	Determined by riders	Weekly Show and Go The riders will determine the ride leader, distance and pace
Sun Jan. 20	9:30 AM	20-30 miles 11-14 mph	Panera Bread Elmhurst	Determined by riders	Sunday without Petra Petra's usual Sunday AM ride, but we need volunteers to lead this as a Show and Go during January.
Sun Jan. 20	9:30 AM	20-25 miles 16-18 mph	Panera Elmhurst	Dave Polkow 630-832-8131	Sunday Morning Fast Ride A brisk paced road ride with optional sprints. There is usually no rest stop for this shorter ride. This ride goes out whatever the weather - in case of poor road conditions, a notice will be sent out to bring mountain bikes.
Sun Jan. 20	9:30 AM	20 miles 10-12 mph	Panera Elmhurst	Determined by riders	Sunday Slow Ride Show & Go The slow ride is a S&G for January.
Sun Jan. 20	9:30 AM	30-40 miles 15-17 mph	Panera Elmhurst	Jeff Wincentsen 630-832-3338	Jeff's Sunday Morning Ride A road ride exploring DuPage and Cook counties. Includes one short stop. Bring enough food/drink to refuel. Temps below 32 degress at ride start time or precipitation will cancel.
Sun Jan. 20	12:30 PM	Determined by riders	Gazebo Glen Ellyn	Determined by riders	Sunday Show and Go The riders who show will decide ride leader, distance and pace.
Tues Jan. 22	9:30 AM	3 Hour Hike	Waterfall Glen Forest Preserve	Ted Sward 708-354-5782	Ted's Tours Part 8 Meet in the parking lot of the Park Ranger's Residence / Outdoor Education Camp. 7710 mile west of Rt. 83 on Bluff Rd. Bring snacks.
Wed Jan. 23	10:00 AM	Determined by riders	McCullum Park Downers Grove	Determined by riders	Wednesday Show and Go The riders will determine the ride leader, distance and pace
Wed Jan. 23	6:30 PM	Determined by riders	Depot Villa Park	Determined by riders	Wednesday Night Ride Show n Go The riders who show will decide ride leader, distance and pace. Lights are needed.
Fri Jan. 25	10:00 AM	Determined by riders	Sunset Knoll Park Lombard	Determined by riders	Friday Show and Go The riders will determine the ride leader, distance and pace
Fri Jan. 25	7:00 PM	Monthly Col- lating Party	Mikesell's House Villa Park	Judy Mikesell 630-833-1036	Newsletter Collating Party Join fellow members in preparing next month's newsletter for mailing. Takes about 45 minutes. Call Judy for directions.
Sat Jan. 26	10:00 AM	Determined by riders	Depot Elmhurst	Determined by riders	Weekly Show and Go The riders will determine the ride leader, distance and pace
Sun Jan. 27	9:30 AM	20-30 miles 11-14 mph	Panera Bread Elmhurst	Determined by riders	Sunday without Petra Petra's usual Sunday AM ride, but we need volunteers to lead this as a Show and Go during January.
Sun Jan. 27	9:30 AM	20-25 miles 16-18 mph	Panera Elmhurst	Dave Polkow 630-832-8131	Sunday Morning Fast Ride A brisk paced road ride with optional sprints. There is usually no rest stop for this shorter ride. This ride goes out whatever the weather - in case of poor road conditions, a notice will be sent out to bring mountain bikes.

Date	Time	Distance	Start	Leader	Ride Description
Sun Jan. 27	9:30 AM	20 miles 10-12 mph	Panera Elmhurst	Determined by riders	Sunday Slow Ride Show & Go The slow ride is a S&G for January.
Sun Jan. 27	9:30 AM	30-40 miles 15-17 mph	Panera Elmhurst	Jeff Wincentsen 630-832-3338	Jeff's Sunday Morning Ride A road ride exploring DuPage and Cook counties. Includes one short stop. Bring enough food/drink to refuel. Temps below 32 degrees at ride start time or precipitation will cancel.
Sun Jan. 27	12:30 PM	Determined by riders	Gazebo Glen Ellyn	Determined by riders	Sunday Show and Go The riders who show will decide ride leader, distance and pace.
Tues Jan. 29	9:30 AM	3 Hour Hike	Little Red School House	Ted Sward 708-354-5782	Ted's Tours Part 9 New route. Little Red School House is 1/2 mile south of 95th St. on Willow Springs Rd. (Flavin/104th Ave.) Bring Snacks.
Wed Jan. 30	10:00 AM	Determined by riders	McCollum Park Downers Grove	Determined by riders	Wednesday Show and Go The riders will determine the ride leader, distance and pace
Wed Jan. 30	6:30 PM	Determined by riders	Depot Villa Park	Determined by riders	Wednesday Night Ride Show n Go The riders who show will decide ride leader, distance and pace. Lights are needed.



Directions to Ride Start Locations

STARTING POINT	DIRECTIONS
Community Bank of Elmhurst Elmhurst, IL	330 West Butterfield Road, at the intersection of Butterfield Road and Spring Road. The Community Bank is on the southwest corner. Meeting room is on the second floor. Please don't bring bikes into the meeting room.
Depot Elmhurst, IL	Rides start from the public parking lot just east of York Road on Vallette Street. Vallette St. is 1/4 mile south of St. Charles Road, York Road is 1 mile west of I-290.
Depot Villa Park, IL	The Villa Park Depot is located at the intersection of Villa Ave. & Park Ave. on the IPP. Approximately 2-3 blocks South of the Villa Ave. & St. Charles Road intersection in Villa Park.
Gazebo Glen Ellyn, IL	On the Prairie Path between Park Ave and Main Street. By car, take Roosevelt Road (Route 38) or North Ave. (Route 64) to Main Street Glen Ellyn (about 1 1/4 miles west of I-355) and head into downtown Glen Ellyn. The Gazebo is in the middle of the train station parking lot on the south side of the UP tracks.
IMAX Theatre Woodridge, IL	Located on Rt. 53, one half mile north of Hobson Road, one half mile south of Maple Ave. Riders meet in the parking lot in front of the theatre.
McCollum Park Downers Grove, IL	McCollum Park is located at the SE Corner of 67th and Main Streets in Downers Grove.
Panera Bread Elmhurst, IL	Panera Bread is located on the west side of York Road, just south of North Avenue (Route 64), the same building with CVS Pharmacy. Use southwest parking lot.
Parking Lot at Maple and Park Lombard, IL	The start is located in the parking lot at the NE corner of Maple Street and Park Ave., just east of Lilacia Park and the Helen Plum Memorial Library in Lombard.
Soccer Field St. Charles	Parking lot one block west of Randall Road and one block south of North Avenue (Rt. 64) at the SW corner of Peck and Campton Hills Roads.
Sunset Knoll Park Lombard, IL	On Finley, at Wilson, half a mile north of Roosevelt Road. Please park behind the recreation facility; address is 820 South Finley Road.
Volunteer Park Wheaton, IL	Milepost zero on the Prairie Path Main Stem., at the intersection of Liberty and Carlton Streets/Wheaton. 1/4 mile north of Roosevelt Road, 1/2 mile west of Main Street / Schmale Road.
Waterfall Glen FP Darien, IL	Rides typically start from the parking lot on Northgate Road. This is just south of Interstate 55 and just to the west off of Cass Avenue.

Membership Application & Renewal

APPROVED SNELL or ANSI HELMET IS RECOMMENDED ON ALL RIDES. USE OF HEADPHONES IS PROHIBITED BY THE ILLINOIS VEHICLE CODE, AND THEREFORE IS NOT ALLOWED ON ELMHURST BICYCLE CLUB RIDES.

CALL THE EBC RIDE HOTLINE 630-415-BIKE FOR UPDATES.

Disclaimer—Elmhurst Bicycle Club Release and Liability Waiver

For liability protection and insurance purposes, it is the policy of the Elmhurst Bicycle Club ("EBC") to require all of its members to sign the Release and Liability Waiver which is a part of the EBC Membership Application. Guests of the EBC (which term includes all non-members of EBC) who wish to participate in any EBC bicycle ride must sign the equivalent release and liability waiver contained on the EBC Ride Sheet before the ride starts. Any guest refusing to sign the release and liability waiver may not participate in the ride. Should the ride continue, however, with the participation of the non-signing guest, the ride will no longer be considered to be an EBC sponsored or sanctioned ride.

MEMBERSHIP APPLICATION

__ Individual(\$20) __ Family(\$25) __ New __ Renewal

*[Indicate with ** next to any information you do not want to appear in the club directory]*

EBC's membership year runs from January 1 to December 31.

Name: _____

(If family membership, list names of all members)

Address: _____

(Street)

(City)

(State)

(Zip)

Phone—Home _____ Work _____ E-Mail _____

Delivery of your newsletter by website download will be assumed unless Editor is notified otherwise.

The following is a Release and waives your rights in the event of injury and/or death. In consideration of being permitted to be a member of Elmhurst Bicycle Club and to participate in club rides and/or events, including transportation to and from same, I do hereby for myself, my heirs, executors and administrators, release, waive and forever discharge Elmhurst Bicycle Club, its officers and members from any and all claims, demands, actions or liabilities on account of any injury to me which may occur from any cause whatsoever, including negligence or other fault on the part of anyone released hereunder, during my participation in or transportation to or from said rides and/or events. I ACKNOWLEDGE I AM AWARE OF THE RISKS AND HAZARDS INHERENT UPON ENGAGING IN SAID CLUB ACTIVITIES, AND I DO SO ENTIRELY UPON MY OWN INITIATIVE, RISK AND RESPONSIBILITY. I FURTHER UNDERSTAND THE CLUB DEPENDS ON ITS MEMBERS TO PROVIDE AND LEAD CLUB ACTIVITIES AND THAT THOSE MEMBERS RELY ON THE PROTECTION AFFORDED HEREUNDER. I hereby further agree to operate my bicycle in a manner that is safe to me and those around me, to observe all applicable safety regulations and to conduct myself in a manner that will be complimentary to the sport of bicycling. It is my intent that this release and waiver apply at all times, notwithstanding that my membership in the Elmhurst Bicycle Club may have expired, elapsed, been renewed or reinstated after a period of non-membership. I FURTHER ACKNOWLEDGE THAT I HAVE READ THE FOREGOING RELEASE AND WAIVER AND UNDERSTAND IT, INCLUDING THAT IT IS INTENDED TO COVER OCCURRENCES WHICH MAY NOT YET HAVE OCCURRED AND WHICH ARE UNKNOWN TO ME, AND NOTWITHSTANDING THE FOREGOING, I SIGN IT VOLUNTARILY WITH THE FULL INTENT THAT IT BE FOREVER ENFORCEABLE.

Date _____ Signature _____

Signatures of adult family members for family Membership

Mail to: Elmhurst Bicycle Club, P.O. Box 902, Elmhurst, IL 60126

THE CHICAGOLAND BICYCLE FEDERATION,
THE LEAGUE OF AMERICAN BICYCLISTS,
THE LEAGUE OF ILLINOIS BICYCLISTS,
LIFE MEMBER ILLINOIS PRAIRIE PATH,
MEMBER CONSERVATION FOUNDATION,
RAILS TO TRAILS CONSERVANCY,
AND ADVENTURE CYCLING.

Elmhurst Bicycle Club
P.O. Box 902
Elmhurst, Illinois 60126
www.elmhurstbicycling.org

Meeting Minutes

December 13, 2007

By Tom Manata

Board of Trustees

1. Appears no volunteer for Metro Chairperson so Metro for 2008 will be cancelled.
2. Suggested keeping the same number of sponsors to maintain income for the club.
3. Bob Hoel will be our new Advocacy Chairperson.
4. Trying to verify with Joann regarding a donation that was made to the IPP for a club sponsored sign along the path. Ray is checking into this.
5. Trying to come up with new ideas for other forms of club income such as fundraisers or other riding events.
6. It was suggested board members consider spending up to 20% of club income on promotion and other club activities.
7. Voted on funding for an alternative club logo to be voted on against the current Banana Man.
8. Perhaps donate up to \$500 to a school or organization who comes up with the best logo.
9. Need to find and agree on ways to donate club money for good causes related to cycling.
10. Discussed having a club vote on keeping the current club logo or getting a new one.

Membership

1. Bob Hoel, our new Advocacy Chairman gave a presentation at the club meeting.
2. Items for the Newsletter need to be in by December 16th.
3. Announced new Board Members for 2008. They are as follows:
 - Susan Sperl: Membership Chairperson
 - George Pastorino: Treasurer
 - Ray Dal Lago will remain President. Steve Josephs will remain Vice Pres, Ride Captain and Tom Manata will remain Club Secretary.
4. Nick Cargola from the Schaumburg Bicycle Club gave a speech about his club and said the Spring Forward Invitational will be April 27th, 2008 in Union, Illinois. Nick is also a new member of EBC.
5. Rides for January need to be submitted by December 16th.
6. Our yearly pizza party took place at the club meeting.
7. Membership numbers as follows: 68 family, 200 individual, 268 total memberships and 357 total members.
8. Representative from Voler gave a presentation on new technology for club jerseys and brought samples to try on.
9. Bank account information: \$3391.52-cd \$21,070.97 savings acct for a total of \$24,462.49.